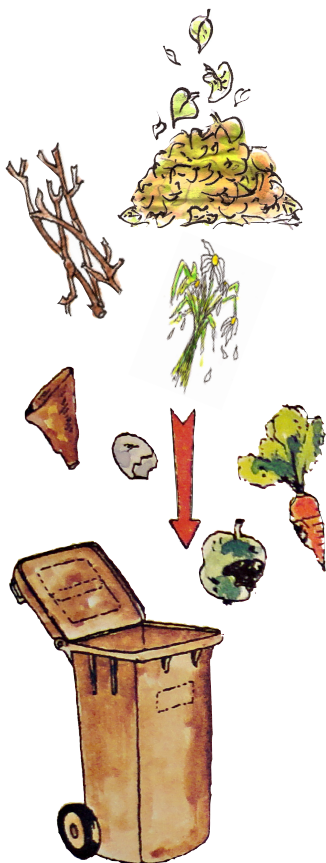


# Where can you put your waste in Ammerland?

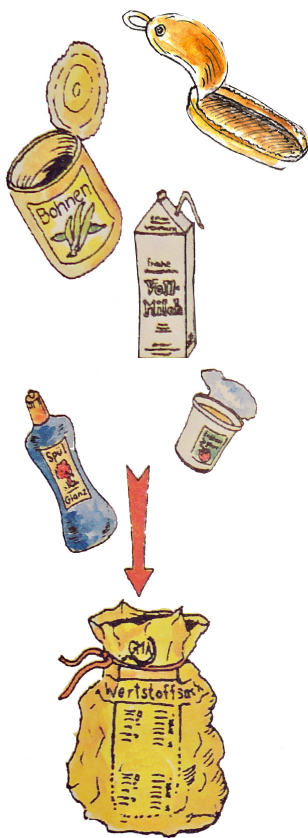
## Bio-waste bin



### Bio-waste

Food leftovers, bread leftovers  
Fruit and vegetable waste  
Coffee filters, tea leaves  
Plant waste, moss  
Lawn clippings, leaves

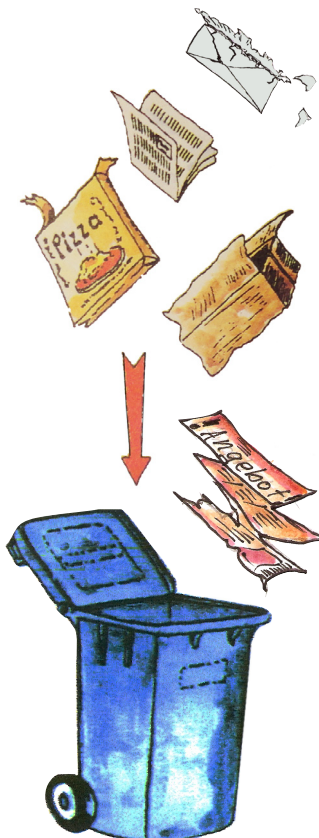
## Yellow recyclables sack



### Packaging made of plastic, metal and composite material

Tins  
Juice and milk cartons  
Plastic containers  
Plastic bags

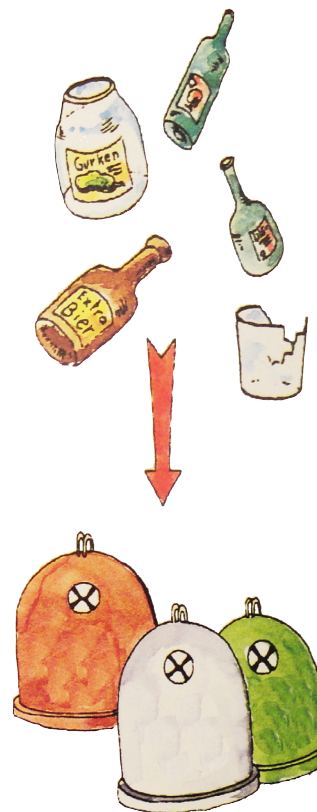
## Waste paper bin



### Cardboard / Paper

Newspapers, magazines  
Packaging made of paper / cardboard  
Cartons, envelopes  
Brochures, catalogues, booklets

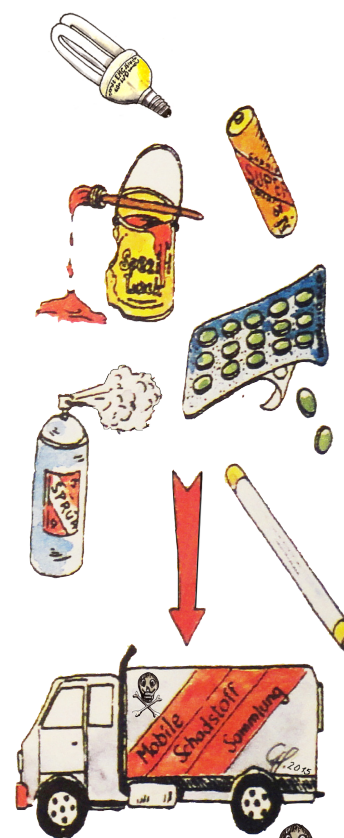
## Bottle banks



### White, green, amber glass

Bottles  
Glass jars  
Glasses, preserving jars  
Personal care bottles  
Bottles made of glass

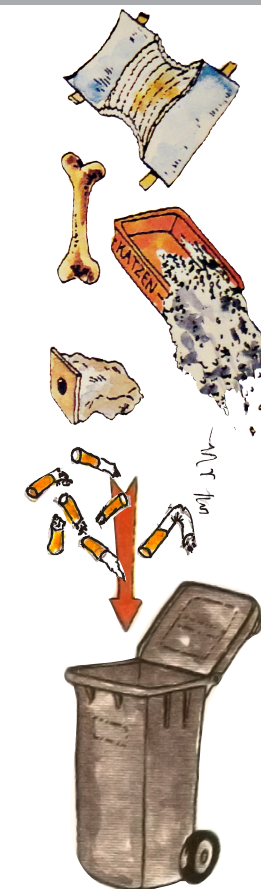
## Hazardous waste



### Hazardous wastes

Small electric parts, batteries  
Spray cans with residues  
Paint / varnish residues, drugs  
Energy-saving bulbs  
Fluorescent tubes

## Residual waste bin



### Residual waste

Handkerchiefs Vacuum cleaner bags, sweepings  
Porcelain, pottery, clay  
Cat litter, bones  
Cigarette ends, nappies